



Welcome Reception Autumn Term Meeting

Mrs Davis, Mrs Skidmore and Mrs Dani

Mrs King, Mrs Bell Ms Ramsay and
Mrs Kortach

JD

Tapestry



- * If you haven't already you will be sent activation details for your account or have one if your child was in Nursery. Please ensure you log on regularly as this will be our main form of communication.



Attendance

- * **Punctuality** - Please arrive and collect your child on time.
At the start of the day – come through the Outdoor Classroom and send them up the ramp on their own. Children can come in between **8.40am – 8.45am.** The doors will be closed promptly at 8.45am and then you will have to walk round to the office for your child to be signed in late on the register and given a late token.
- * **No holiday will be authorised during term time and children who are late after the register closes your child will be marked as an unauthorised absence.**
- * **Absences** – please call the office to inform us of your child's absence. All reasons for absence must be recorded in the register, otherwise it will remain an unauthorised absence.

Attendance

- * **At the end of the day** - Please telephone the school if you are running late. Children can become very upset if they are late to be collected. Please remember **we finish at 3.15pm.** If you are late your child will be sent to Rainbow Club and there will be a charge.
- * **Collection** – Please make a line outside your child's class. **Be patient we have to dismiss safely and are still matching parents and children!** Only adults on the collection list will be allowed to pick the children up. Once you have collected your child please leave the area to avoid congestion. **Ensure the office has the correct contact details for you and has emergency contact details.**

ES

Class information

- * **Class Fund** – In early years we learn through play and enjoy lots of practical activities, such as cooking, science experiments. We would be really grateful if you were able to pay £1.50 each half term to enable us to buy cooking ingredients, seeds, resources for experiments, etc. each half term. This will be set up through school money in the next few days.
- * **Donations** – We are really grateful for donations given to us by parents. Throughout the year we will make various requests, these could be for:
 - * Tissues,
 - * Clean recyclable materials (no packaging that may have contained nuts)

LK

Class information

Speaking to a member of staff – wait until the end of the day once all the other children have been dismissed.

- * **Don't come up the ramp at beginning or end of the day**
- * **Medical** – Please keep us up to date with any medical changes. Children who have medication/allergies should already have health care plans, medication must be prescribed by dr labelled with name and in date. Appointments out of school time let us and the office know, show letter.
- * **Lunch** – Ensure their lunch is healthy and that there is the right amount for your child. No nuts, sweets or chocolate. Children can change between school dinners and packed lunch each day.
- * **Milk** – The government pays for your children to have milk until their 5th birthday. If your child would like milk once they are 5 you need to register with Cool Milk online to pay for their milk. If PP it's funded

LK

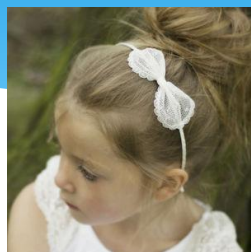
Uniform



Clothing – Please label all items of **your child's clothing** especially jumpers, coats and their shoes. We have already had several children lose unnamed jumpers.

LK

X

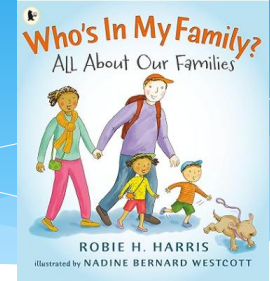


✓



LK

Class information



- * **Birthdays** – you may wish to send in a book or some plants/seeds to celebrate their birthday. No individual gifts/sweets.

- * **Climbing frame in the main playground** – children are **NOT** allowed on this at **ANY** time.

ES

Class information

P.E. – children will come into school in a white t-shirt, blue jogging bottoms/shorts and black plimsolls. We will send a text once we begin.

PE days are:

Blue – Tuesday

Red – Thursday

PE Kit - White T-shirt, navy shorts/joggers, trainers with Velcro (only on PE days).



- * **Book Bags** – Please keep your child's book safe in their book bag at all times. There is a charge for lost or damaged books. Bring your book bag every day.

Library days are:

Blue – Wednesday

Red – Tuesday



Parent and school partnership - Supporting your child

LK



- * **Graphemes/Phonemes/Key words** – we focus on a small number of phonemes each week and key words each week. We shall keep you informed of these via Tapestry. After half term there will be a parent/child workshop to help you support your child with learning to read and write.
- * **Reading** – the children will begin to bring home a reading book once we have taught them some phonemes. Encourage them to sound out and blend the words in the book. Make it fun! Please write in their diaries only about their reading book.

LK

Supporting your child

- * Reading should be enjoyable! Look for signs in the environment, such as ASDA. Share books with your children, have a bedtime story.
- * Once we start learning the phonemes we will share some CVC words via Tapestry.



Make reading fun!

ES

Supporting your child

- * Symbols – pre writing helps with letter formation
- * Fine motor skills
- * Writing should be for a purpose – ask them to write you a shopping list, a card for someone's birthday, etc.
- * We will share how to form the letters correctly via Tapestry as we learn them.
- * Supporting pencil grip,
- * Left handed children



This year we are introducing a whole school writing approach called
I'm a Clever Writer



ES Supporting your child

Any maths 'work' you do with your child should be practical and involve objects, do lots of counting up steps, looking for door numbers, look for shapes around your house and when you are outside too.



Make maths fun!

ES



Thank you for coming

Please let me know if you have any questions or concerns both now and in the future.